

## PROSECUTING ATTORNEY

### What we do

The County Prosecuting Attorney's office is the County's law office. The attorneys and staff and others provide the legal services of the office by state statute, Chapter 36.27. The work is divided into five major subject areas which may be considered "program areas" in the budget:

- **Civil Representation.** The prosecuting attorney represents all County elected officials and departments and others on a wide range of civil issues including contracts, real estate, land use, municipal law, procedure, zoning enforcement, claims, lawsuits, public records and other subjects. Last year, lawyers in the civil section appeared for the County in four different county superior courts, two different appellate courts, the state supreme court, and numerous state and local boards.
- **Criminal.** The prosecuting attorney is the attorney for the people and the state of Washington on all criminal matters that occur in San Juan County, including all felony, gross misdemeanor, misdemeanor offenses and traffic infractions. The Prosecutor advises the Sheriff on matters of procedure. Upon receiving case referrals, the prosecutor reviews the files for completeness and then will file or decline charges, as appropriate.
- **Crime Victims Center.** The prosecuting attorney provides comprehensive services for victims of all types of crimes and is linked with a regional Crime Victim Services Center. This section of the office assures that the concerns of the victims for safety and restitution are made known to prosecutors and judges. The office assists victims of violent and sexual crimes in finding the assistance and support they need to feel safe and live a productive life.
- **Coroner.** In small counties, the prosecuting attorney is the county coroner. As coroner, the prosecutor determines the cause and manner of death, notifies next of kin and arranges for disposition of persons who are not claimed by relatives. Because the prosecutors are lawyers, not doctors, the prosecutors contract with the Snohomish County Medical Examiner, its investigators, and the members of the sheriff's office to do its work.
- **Child Support.** The prosecuting attorney represents the attorney general in the establishment of paternity and the modification and enforcement of the laws that require payment of child support.



Prosecutor Randall Gaylord

### 2008 Goals and Objectives

- Contribute to a safe and healthy community by the prompt and appropriate prosecution of criminal case referrals.

# Prosecutor ~ *continued*

---

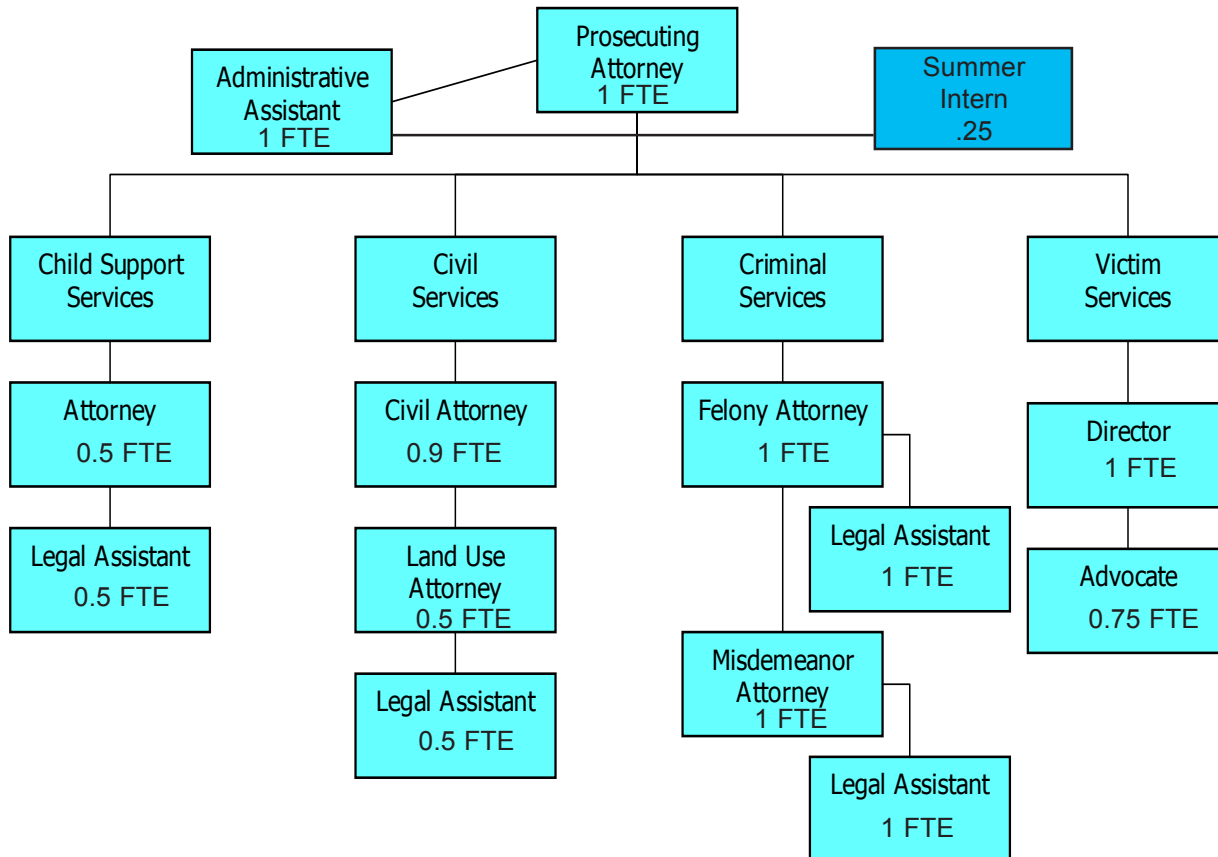
- Provide high quality and cost-effective legal services for the officials and departments of San Juan County.
- Continue to implement the San Juan County "Home Rule" Charter by the revision of inconsistent provisions of the San Juan County Code and advise on the development of new procedures.
- Increase the position of land use civil deputy prosecutor from 0.5 FTE to 1.0 FTE to meet needs in this subject area and to address issues of non compliance with the Growth Management Act at Eastsound and Lopez Village, land use enforcement and defense of county decisions in land use litigation. Salary and benefits: \$46,000.
- Establish new position of receptionist. This need has been acknowledged and discussed for over 5 years. It has not been pursued because of inadequate space. Next year, there will be more space available to the Prosecuting Attorney as offices shift in the Courthouse. This position is essential to a productive working environment for the legal assistants and lawyers. Although this is a full time position, we are requesting it beginning in June 2008, when it is expected that the space will be available. Salary and benefits: about \$16,000 in 2008, \$32,000 thereafter.



*Department Staff (left to right) Prosecutor Randall Gaylord, John Larson, Camolyn Armstrong, Alex Earl, Toni Bailey, Charlie Silverman, Stephen Brandli, Susan Kimball, Heather Spaulding, Jon Cain, Liz Pillow. (Not pictured: Karen Vedder)*

# Prosecutor - continued

## Department Organizational Chart



Fiscal Year	2004	2005	2006	2007	2008 Budget
FTEs	10.75	10.75	10.90	10.90	10.90

# Prosecutor - *continued*

## Department Budget

<b>Expenditures by Object:</b>	<b>2006 Actual</b>	<b>2007 Budget</b>	<b>2008 Preliminary</b>
Reallocated	2,650	0	44,000
Personnel	483,036	522,790	523,347
Benefits	103,969	137,560	143,604
Supplies	13,318	12,600	11,015
Services	157,260	140,840	98,825
Intergovernmental	15,483	9,000	0
Interfund Payments	15,710	17,950	38,040
<b>Total</b>	<b>\$791,426</b>	<b>\$840,740</b>	<b>\$858,831</b>

<b>Expenditures by Program:</b>	<b>2006 Actual</b>	<b>2007 Budget</b>	<b>2008 Preliminary</b>
Legal	727,427	768,170	789,831
Coroner	25,378	28,190	25,000
Transfers Out	38,621	48,000	44,000
<b>Total</b>	<b>\$791,426</b>	<b>\$844,360</b>	<b>\$858,831</b>



**Law Library Budget**

<b>Expenditures by Object:</b>	<b>2006 Actual</b>	<b>2007 Budget</b>	<b>2008 Preliminary</b>
Supplies	273	2,520	1,850
Services	27,671	17,750	22,530
Interfund Payments	0	0	3,738
<b>Total</b>	<b>\$27,944</b>	<b>\$20,270</b>	<b>\$28,118</b>

**Establishment.** Each county with a population of eight thousand or more shall have a county law library

**Board of trustees — Composition — Terms.** Unless a regional law library is created pursuant to RCW [27.24.062](#), every county with a population of eight thousand or more but less than three hundred thousand must have a board of law library trustees consisting of five members to be constituted as follows: The chairman of the county legislative authority is an ex officio trustee, the judges of the superior court of the county shall choose one of their number to be a trustee, and the members of the county bar association shall choose three members of the county to be trustees. If there is no county bar association, then the lawyers of the county shall choose three of their number to be trustees.

**Library rooms and service.** The county legislative authority of each county that is required to maintain a county law library shall upon demand by the board of law library trustees, provide a room suitable for the law library, with adequate heat, light, and janitor service.

**Free use of library.** The use of the county law library shall be free to the judges of the state, to state and county officials, and to members of the bar, and to such others as the board of trustees may by rule provide. Residents of counties with a population of three hundred thousand or more shall have free use of the law library.

**Portion of filing fees for county or regional law library.** In each county pursuant to this chapter, the county treasurer shall deposit in the county or regional law library fund a sum equal to seventeen dollars for every new probate or civil filing fee, including appeals and for every fee for filing a counterclaim, cross-claim, or third-party claim in any civil action, collected by the clerk of the superior court and seven dollars for every fee collected for the commencement of a civil action and for the filing of a counterclaim, cross-claim, or third-party claim in any civil action in district court for the support of the law library in that county or the regional law library to which the county belongs: PROVIDED, That upon a showing of need the seventeen dollar contribution may be increased up to twenty dollars or in counties with multiple library sites up to thirty dollars upon the request of the law library board of trustees and with the approval of the county legislative body or bodies.

**CRIME VICTIMS FUND BUDGET**

<b>Revenues:</b>	<b>2006</b>	<b>2007</b>	<b>2008</b>
	<b>Actual</b>	<b>Budget</b>	<b>Budget</b>
Program Fees	10,500	12,500	12,000
Beginning Cash	45,290	42,000	47,620
<b>Total</b>	<b>\$55,790</b>	<b>\$54,500</b>	<b>\$59,620</b>

<b>Expenditures by Object:</b>	<b>2006</b>	<b>2007</b>	<b>2008</b>
	<b>Actual</b>	<b>Budget</b>	<b>Preliminary</b>
Supplies / Services	0	1,000	0
Interfund Transfer Out	0	16,000	16,000
Ending Cash	0	4,000	43,620
<b>Total</b>	<b>\$0</b>	<b>\$21,000</b>	<b>\$59,620</b>

**CRIME VICTIMS COMBINED BUDGET**

<b>Expenditures by Object:</b>	<b>2008</b>	<b>2008</b>	<b>2008</b>
	<b>Crime Victim Fund</b>	<b>Crime Victim Grant</b>	<b>Total</b>
Personnel	0	133,415	133,415
Benefits	0	41,813	41,813
Supplies	0	700	700
Services	0	39,455	39,455
Interfund Transfer In	16,000	0	16,000
Ending Cash	43,620	0	43,620
<b>Total</b>	<b>\$59,620</b>	<b>\$215,383</b>	<b>\$275,003</b>